

Specifications

	Mk2500	Mk1500	
Printing method	Thermal transfer		
Resolution	300dpi		
Printing speed	Tube : High speed 40 mm/s, Middle speed 25 mm/s, Low speed 18.5 mm/s Label : High speed 40 mm/s, Middle/Low speed 25 mm/s	Tube : High speed 25 mm/s, Standard 18.5 mm/s, Low speed 12.5 mm/s Label : High speed 25 mm/s, Standard/Low speed 18.5 mm/s	
Output rate	High speed : About 42 pcs./min. Middle speed : About 35 pcs./min. Low speed : About 30 pcs./min. (Printing 20mm tubes, 5 full-size characters, consecutive print mode, half - cutting.)	High speed : About 35 pcs./min. Standard speed : About 30 pcs./min. Low speed : About 21 pcs./min. (Printing 20mm tubes, 5 full - size characters, consecutive print mode, half - cutting.)	
Ink Ribbons	Exclusive cassette. Black : 100 m; White : 85 m; Black for Marking Strip (40m)	Exclusive cassette. Black : 100 m; White : 85 m	
Character sizes	1.3 mm (only full-width available), 2 mm, 3 mm, 6 mm (full-width, half-width available for each).	2 mm, 3 mm, 6 mm (full-width, half-width available for each).	
Input modes	Alphanumeric, Symbol input		
Display	LCD Graphic (160 x 64 dots)		
Display capacity	10 characters / line x 2 lines (full-width) or 20 characters/line x 2 lines (half-width) (3 lines editing is possible.)	10 characters / line x 2 lines (full-width) or 20 characters/line x 2 lines (half-width)	
Built-in memory	Print data: Approx. 2,500 characters Files: Approx. 15,000 characters Service life of internal backup battery for data storage: About 5 years	Print data: Approx. 2,500 characters Files: Approx. 7,500 characters Service life of internal backup battery for data storage: About 5 years	
Media cutting method	Automatic full - cutting, Automatic half - cutting		
Power supply	Exclusive AC Adapter (Input voltage : AC 100V - 240V 50 / 60 Hz)		
PC interface	USB2.0 Full - Speed, Exclusive PC Connection Kit(Included)	—	
Operating environment	15° C - 32.5° C (59° F - 90.5° F), 10% - 85% RH. Range is lowered to 5° C (41° F) with Tube Warmer option installed.		
Storage environment	5° C - 35° C (41° F - 95° F), 10% - 90% RH		
Dimensions (W x D x H)	250 x 300 x 85 mm (9.8 x 11.8 x 3.4 in.)		
Weight	2 kg (4.4 lb.) (printer only)		
Print Media	Tube	PVC tube, φ 2.5-6.5 mm, 0.5 mm thick Tube attachment option is required. (Other tubes should be tested for printing.)	
	Label Tape	Exclusive cassettes (White, Yellow, Silver) Widths : 6 mm, 9 mm, 12 mm, Length 30 m (Silver: 27 m) Segment length can be set to 2 mm through 150 mm.*	
	Wrap Around Tape	Exclusive cassettes Print area only : White, Other areas: Transparent Take-up length : 8 m Length : 33 mm Width : 6 -150 mm (depends on cut setting)	
	Marking Strip	Specified thickness : 0.5 mm Plates of other thickness should be tested for printing. Width : 8 mm, 8.5 mm, 9 mm, 9.5 mm, 10 mm Plate Attachment option is required. Exclusive ribbon cassette is required. Manual cut only	
	Heat Shrink Tube	Shrink tube φ 3.0-6.4mm Tube attachment option is required. (Other tubes should be tested for printing.)	
	4mm ID strip	4mm ID strip Exclusive cassette (White, Yellow) Width 4mm, Length 5m, Segment length can be set to 8mm through 150mm.	

* If 1.3mm full-width or 2mm half-width character is specified for segment length of less than 3mm, text might be printed crossing over cutting line.

Option

Product Code	Product Name	Compatible Printer
3471A026	Tube Warmer Set	Mk2500/Mk1500
3471A027	Tube Feeder Set	Mk2500
3471A032	Wrap Around Tape Guide	Mk2500/Mk1500
4013B001	Hard Case	Mk2500/Mk1500
3476A044	Soft Case	Mk2500/Mk1500
3471A033	Plate Attachment	Mk2500
3476A046	Tube Attachment	Mk2500/Mk1500

Consumables

Product Code	Product Name	Product Code	Product Name
3604B001	Ribbon Cassette Black (100m)	3476A042	Cutter Set
3607B001	Ribbon Cassette White (85m)	3476A043	Cleaner Set for Tube Attachment and Tube Feeder
3606B001	Ribbon Cassette Black for Marking Strip(40m)	3476A078	Cleaner Set for Plate Attachment
3476A023	Label Tape Cassette6mm x 30m(White)	3476A071	Cleaner Set for Tube Warmer
3476A024	Label Tape Cassette9mm x 30m(White)		
3476A025	Label Tape Cassette12mm x 30m(White)		
3476A026	Label Tape Cassette6mm x 30m(Yellow)		
3476A027	Label Tape Cassette9mm x 30m(Yellow)		
3476A028	Label Tape Cassette12mm x 30m(Yellow)		
3476A068	Label Tape Cassette6mm x 27m(Silver)		
3476A069	Label Tape Cassette9mm x 27m(Silver)		
3476A070	Label Tape Cassette12mm x 27m(Silver)		
3476A075	Wrap Around Tape33mm x 8m(White)		
3476A035	4mm ID Strip 4mm x 5m (White)		
3476A072	4mm ID Strip 4mm x 5m (Yellow)		



Ribbon Cassette Label Tape Wrap Around Tape



Caution!
Before you use an Mk series printer, please read the instruction manual thoroughly.
When you use the printer, obey all instructions in the manual. Always operate the printer with the power supply and voltage rating described in the manual for your country.

Specifications are subject to change without prior notice for product improvement.

NISCA Corporation(Canon Group)
430-1 Kobayashi Fujikawa-Cho
Minamikoma-Gun Yamanashi-Ken 400-0593 JAPAN

CABLE ID PRINTER Mk2500 / Mk1500



Canon Cable ID Printer Meeting Various Needs for Marking at Work Sites



Amazingly Fast, Easy, and Clear! Bring Tremendous Improvement in Work Efficiency! Various Features Helping You a Lot in Your Work

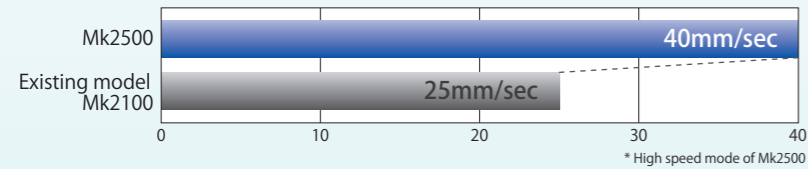
●..... Mk2500 ●..... Mk1500

Printing Speed 40mm/s

Best-in-class printing speed of 40 mm/s*
The high-speed printing feature helps the site worker print characters on a lot of media.



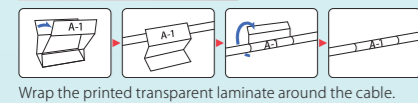
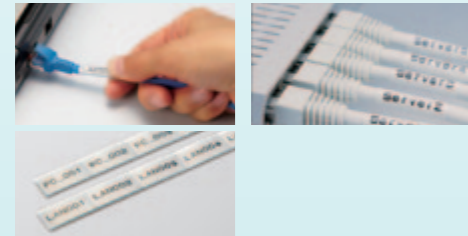
●60% Faster Printing Speed



Printing Material

Wrap Around Tape

Transparent laminate covers the printed surface – no need to worry about friction wearing away letters. Width:8-150mm. Length of printed text can vary according to different use.



Tubes

Direct printing on commercially available round tubes (inner diameter: 2.5 to 6.5 mm*) is possible. High-quality clear and crisp printing ensures high management efficiency.

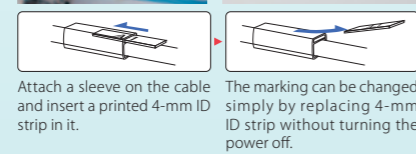
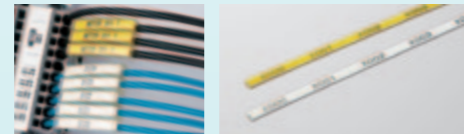
* The Mk1500 is compatible with 2.5 mm to 5.2 mm diameter cables.



4mmID STRIP

By inserting a 4-mm ID strip in the sleeve attached on the cable, the cable marking can be changed without disconnecting the cable from the terminal. There is no risk of interfering with conduction and damaging the cable.

* Use commercially available sleeves.

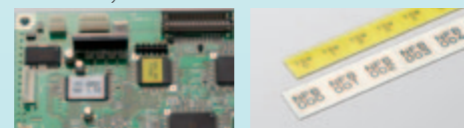


Attach a sleeve on the cable and insert a printed 4-mm ID strip in it.
The marking can be changed simply by replacing 4-mm ID strip without turning the power off.

Label tapes

Characters can be printed on the labels to be affixed to the devices at distribution boxes. Characters can be printed from a minimum of 1.3 mm font size*, which is extremely useful for various applications at work sites.

* Mk2500 only



Marking Strip

Using an optional plate attachment allows you to print characters on commercially available marking strips. The print length can be set to 2 mm through 150 mm and it can be adjusted in step of 0.01%. The created data can also be used for tube printing.

* The actual adjustment value is an approximation of a multiple of 0.085 mm. Only Mk2500 supports this feature.



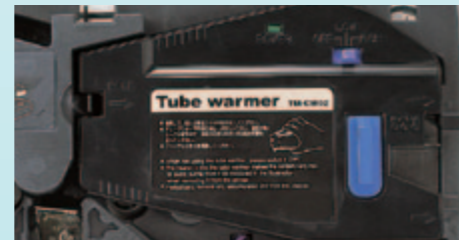
CABLE ID PRINTER Mk2500

Various options

Clear Printing at Low Temperatures Tube Warmer

The tube warmer warms cold tubes before printing, ensuring clear printing in an extremely cold environment or in a cold room.

* Printing under low temperature down to 5° C is guaranteed.



Portable Hard Case Allowing You to Print without Uncasing the Printer

A dedicated hard case is available for handy carrying to the work site. It is made of aluminum and has superior impact resistance for use at poor footholds. In addition, you can print characters without taking the printer out of the case, ensuring smooth work.



Smooth Feeding of Tube Tube Feeder

The tube feeder steadily feeds a tube to the printer from the reel so that the tube does not get tangled.

* Mk2500 only



Various Features

Various Print Patterns

You can use various print features such as framing, selective character orientation, and underlining in addition to selective character size and pitch.



Vertical/Vertical Character

Moreover, Mk2500 supports additional features such as 3 lines/segment printing*, all line centering, and vertical/horizontal character printing.

* Only 1.3 mm (full-width) alphanumeric characters.



Useful display to support your needs

The printer can display the type and amount of ribbon remaining in the ribbon cassette.



Printing Up to Trailing Edge of Tube

The Mk Series printers can print characters up to the edge of each tube to avoid tube waste. This contributes to long-term cost reduction.

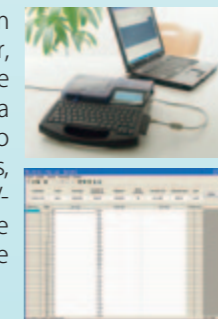


Accessory Supplied with Mk2500

The printer can be linked with PC through USB interface PC Connection Kit

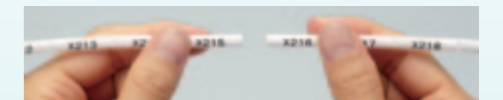
Data can be sent from the PC to the printer, allowing you to create large quantities of data with ease. In addition to the existing original files, the printer can read CSV-format files. This feature greatly reduces the time required for field work.

* Mk2500 only



Automatic Cutting/Full-cut is also possible

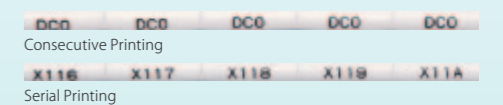
Each segment is partially cut automatically as it prints. The segments are easily separated manually after they come out of the printer. The cutting operation for each job can be set for full-cut, half-cut, no cut with marking, or no cut without marking.



Half cuts can be manually separated easily.

Consecutive/Serial Printing

Mk Series printers can be set to print the same text on every segment (consecutive printing). Just enter the data and the number of segments required, then start the print. Or, Mk Series printer can be set to print numbers that increment automatically as the segments print (serial printing). No need to do separate entries and printing for each segment!



Print Length Adjustment

The print length can be adjusted in steps of 0.01%.

Precise pitch print on a medium requiring high-accuracy printing, such as a marking plate for terminal block, is available.



Simple and Easy-to-Use Standard Model



Affordable Price
High-speed Printing at 25 mm/s

CABLE ID PRINTER Mk1500