

HOTMARKER

SP2300

AUTO MATIC MARKING MACHINE FOR
TUBE, MARKER LABEL AND TERMINAL ID BOARD

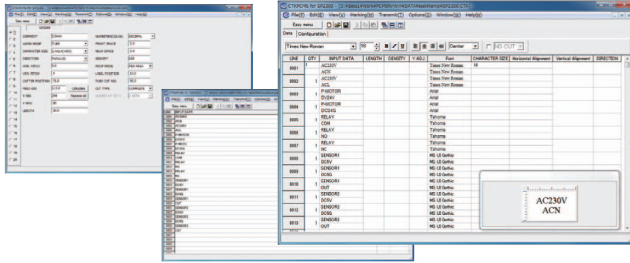


Thermal head Printer

SP2300

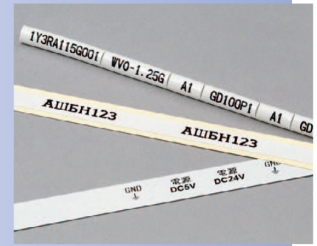
PC-link software

Enables easy operation and data management for different production processes, etc.



Various font style

In addition to internal fonts of SP2000, Windows TrueType fonts installed on your PC can be used to print letters of your local language, electrical symbols, etc. on your materials.



SP2300

Specifications (main unit)

Marking system	Thermal head type	Thermal head	Ref. TPH933
Applicable materials	Soft flexible PVC tubing, O.D. 2.0mm – 19.0mm, Heat shrink tubing of flatly folded width upto 30.0mm Marker Labels (precut & long type) Marker Plates (terminal ID boards)	Data display	Backlit LCD (40 digits x 4 lines)
		Interface	1 x USB port (recommended to link to a PC running "CTKPCMS", etc.) 1 x RS-232C serial port
Style of internal fonts	Our original font styles	Data storage	Max. 1,000 lines of data can be stored in the memory of machine & backed up by internal rechargeable battery.
Kind of characters	96 characters : Capital alphabet letters (A – Z), Numerals (0 – 9), signs (+ - / .), etc.	Power source	AC110-240V, 50/60Hz
Character size & orientation (HOR/VER)	2.4 x 2.4mm / 1.8 x 1.8mm 2.4 x 1.2mm / 1.8 x 0.9mm 2.0 x 1.2mm / 3.0 x 2.4mm	Production capacity	About 4,500 pcs. per hour (under TUBE mode, 5 digits x 1 line marking on 20mm long tube)
		Dimensions (main unit)	310(W) x 290(D) x 325(H)mm
Character size & orientation (HOR only)	5.0 x 3.0mm 2.7 x 2.1mm	Weight (main unit)	11.5 kgs
Multiple-line marking	(1) 22 digits x 1 line (2) 10 digits x 2 lines (3) 6 digits x 3 lines (4) 4 digits x 4 lines	Color (main unit)	Dark purple
		Reference of our genuine foils	Black : S611-20 (standard) (1 roll fitted to machine upon shipment) White : S625-20 (standard) *Contact us for other special foils.
Numbering function	4-digit decimal and hexadecimal automatic numbering possible per text (in ascending and descending order.)		

Software (CTKPCMS for Windows for SP2300)

Operating system	Microsoft Windows Vista (32 bit) Microsoft Windows 7 (32 / 64 bit)
Hardware requirement	PC having features recommended by each operating system & equipped with USB / RS-232C serial port.
RAM	Minimum capacity recommended by each operating system or above.
Hard disk	Minimum capacity recommended by each operating system or above.



PRECAUTIONS TO ENSURE SAFETY



Before using the machine, be sure to read the instruction manuals and understand the proper usage of the machine.

"Windows" is a trademark of Microsoft Corporation. Actual color of the products may look slightly different to the photographs in this leaflet. The information contained in this leaflet, specifications and external appearance of products are subject to change without notice.